

iNet.DM

Document Management
For SAP



LINKING THE BEST OF TWO WORLDS



DATA SHEET

Optimize SAP process-driven management, retrieval and storage of business documents. Leverage the rich functionality of MOSS2007 and Sharepoint Services in support of document driven SAP - .NET business scenarios.

Extending SAP Document Management with SharePoint

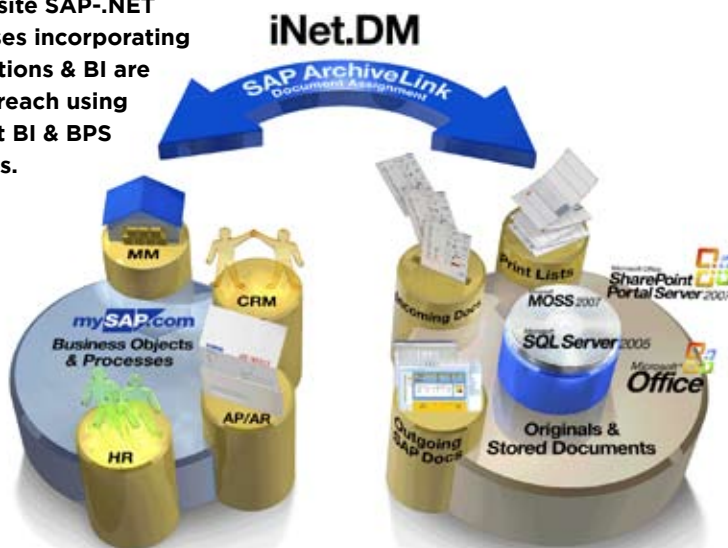
SAP DM linked to MOSS2007. With iNet DM, Microsoft MOSS2007 and SharePoint can be utilized as the core Document Repository and Content Management service for storage, content, collaboration and management (ECM) functions in support of native SAP business processes, or SAP - .NET distributed processes involving SharePoint Portals and Office Applications.

With iNet.DM's usage of the SAP ArchiveLink facility, incoming and outgoing business documents are automatically linked to specific SAP business objects and processes, then stored in SharePoint/MOSS2007.

Unified document management. iNet.DM integrates SharePoint so it provides centralized access to both SAP and non-SAP business content, enabling enterprise-wide content management from a common repository. It supports the enterprise in automating and enhancing the processing, distribution and delivery of business documents.

Broader access to SAP business process related documents. Leveraging SharePoint's back-office integration and enterprise portal facilities, iNet.DM extends user access to SAP documents beyond SAPGUI/SAP Viewer tools to familiar Microsoft working environments.

Composite SAP-.NET processes incorporating transactions & BI are now in reach using the iNet BI & BPS modules.



Document Centric Business Processes



ERP-LINK

Enhanced DM services for SAP

MOSS2007's enterprise services foundation enables enhanced document and repository services for SAP.

- » Integrated search, collaboration and workflows
- » Version control management
- » Access security management
- » Multiple content types & formats

Business Scenarios

Support document-driven SAP-.NET business processes and scenarios like:

- » Invoice processing and distribution
- » Document capture & Bar coding
- » Regulatory compliance
- » Product lifecycle management
- » Plant maintenance
- » Records management
- » Legal documents
- » HR (ESS, MSS)
- » Drawings / diagrams (CAD)
- » Financial records handling

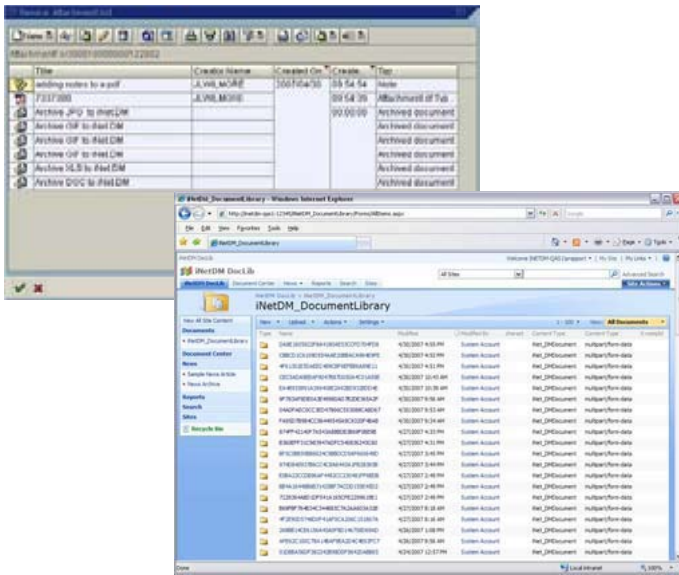
Business Advantages

- » Increase productivity with document enabled R/3® software applications
- » Improve customer service; eliminate manual searches and routing of documents
- » Improve document availability by providing documents at every desktop
- » Improve reporting processes and eliminate time-consuming printing and distribution
- » Minimize implementation costs for integration with other .NET document handling components



Information Worker Solutions
ISV Software Solutions





iNet.DM maps file attributes and document components used in SAP to appropriate SharePoint attributes and folder/documents. iNet.DM provides a SAP defined interface to support all the SAP/R3 processes to create, update, delete and search documents in the repository. Documents can be retrieved from within the SAP system using attributes, or the full text search facility of the MOSS2007 ECM.

Leveraging the Microsoft SharePoint® Technology foundation, iNet.DM delivers a unified platform architecture that ensures integration and consistency across all components, applications and functions in support of enterprise content management.

Technical Overview

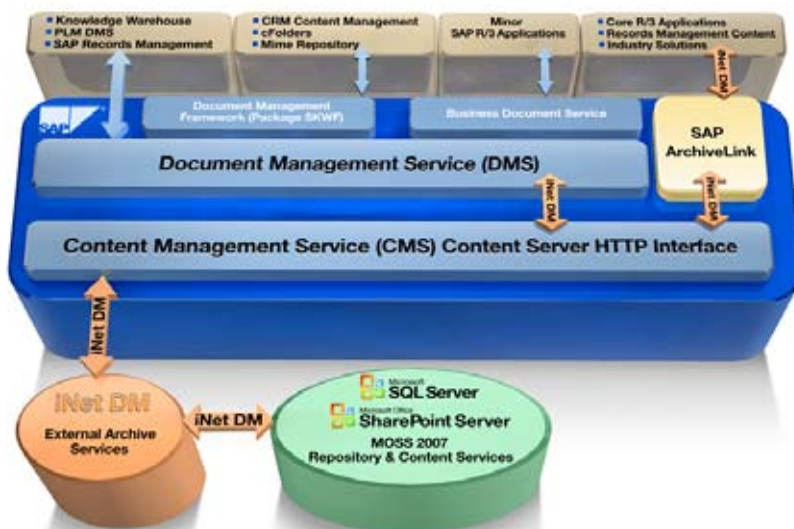
MOSS2007 and iNet DM for SAP provide an integrated solution for the entire life cycle management of various types of business content, including documents, forms, drawings, images, reports, e-mail, and more.

iNet.DM for MOSS2007 is based on the SAP ArchiveLink Content Server Interface. It generates hyperlinks to documents in the MOSS Repository automatically. Users simply click on the corresponding document line and the original document is displayed in the viewer of choice, be it from a SAP application, from a SharePoint web-part, website, etc.

Technical Highlights

- » Enables access to content from multiple working environments.
- » Supports all releases of SAP, regardless of hardware and operating systems. No R/3 changes are necessary.
- » Upgrade Proof. Any new functionality of ArchiveLink in future SAP R/3 releases is automatically supported per the SAP standard interface policy.
- » Reflects SAP security 100% and incorporates SharePoint version control and access security management.
- » Improves SAP processing performance by relieving back-office ERP systems of document management overheads.
- » Substantially reduced TCO thru rapid deployment, low training costs and reduced maintenance overheads.

iNet DM – SAP ArchiveLink & MS SharePoint 2007



About ERP-Link Corp.

Since 1998, ERP-Link has provided solutions to maximize SAP ROI. We enable enterprises to extend SAP systems with new business scenarios and optimized capabilities through integration with Microsoft platforms and information worker tools. ERP-Link's partner network enables companies worldwide to accelerate the business impact of the iNet Business Optimization Platform.

The names of actual products and companies mentioned herein may be the trademarks of their respective owners. ERP-Link makes no warranties, expressed or implied in this summary. The ERP-Link logo, iNet and iNet.DM are copyrights, trademarks or registered trademarks of ERP-Link Corp.



ERP-LINK

310 SW 4th Ave Portland, OR 97204
503.227.1660

www.erp-link.com
info@erp-link.com