

iNet.BPS ODK & Run Time Services



LINKING THE BEST OF TWO WORLDS



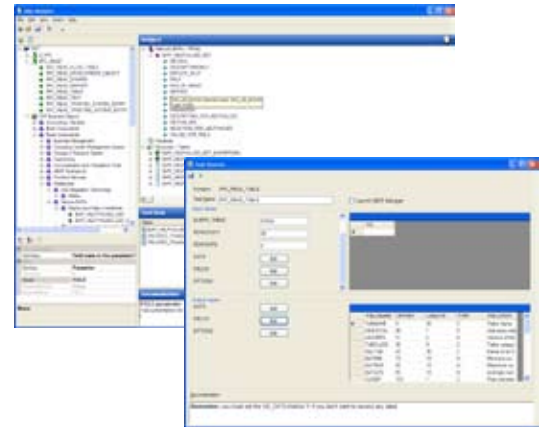
Using iNet.BPS, enterprises can create and deploy distributed SAP - .NET e.Business scenarios, SharePoint Web Part applications or link 3rd party applications to SAP by combining SAP transactional, reporting, analytic, collaboration and workflow tasks in support of their business process enhancements and extensions to SAP.

Optimizing SAP Based Business Processes

Using iNet's Business Process Services, composite SAP- .NET business processes can be created for any combination of information assets, business functions and business documents available in SAP systems. iNet.BPS generates the .NET objects automatically to support the new, enhanced business processes. The newly created business process object can be delivered immediately to any .NET aware environment like Microsoft Office Applications, Sharepoint portals or even published as a SOAP web service.

iNet BPS Philosophy. The iNet Platform is based on the premise that the .NET developer should be abstracted from having to deal with the intricacies and technicalities of the many proprietary and complex parameters of underlying SAP systems. iNet handles all those technology issues behind the scenes as performs it object creation, integration and runtime services, transparent to the user/developer.

Enterprise Class. To support development teams in enterprises with complex business processes, all iNet created objects have the same API. The object with all structures and parameters can be either .NET remotod for distributed processing or prepared for use in SOAP Web Services. Developers can publish and share their new iNet Visual Studio project objects.



- » Complete enterprise-class "Rapid Object Development" and deployment
- » .NET developers are abstracted from the technical intricacies of SAP systems

The iNet platform is architected with the necessary design services to support a pipelined object creation paradigm.

1. SAP Functional Business Analysts can model and define the desired functionality for a new Business Process Object, then publish the Meta model with the BPO, (fully documented) for use by the .NET developer.
2. .NET developers can then use those BPOs in applications, assembling them in any fashion, defining the use case dependencies and creating the client user interfaces specific to the particular use case for those final Business Processes.
3. The final individual BPOs and compound BPO assemblies can be held in collaborative enterprise repositories or in VS2005 Team Services for down stream re-use or incorporation in new business process scenarios.



ERP-LINK



Information Worker Solutions
ISV Software Solutions



BPS Component Overview

iNet Business Process Services (BPS) provides a complete platform and tools for the authoring and deployment of distributed .NET objects in support of optimized SAP business processes.

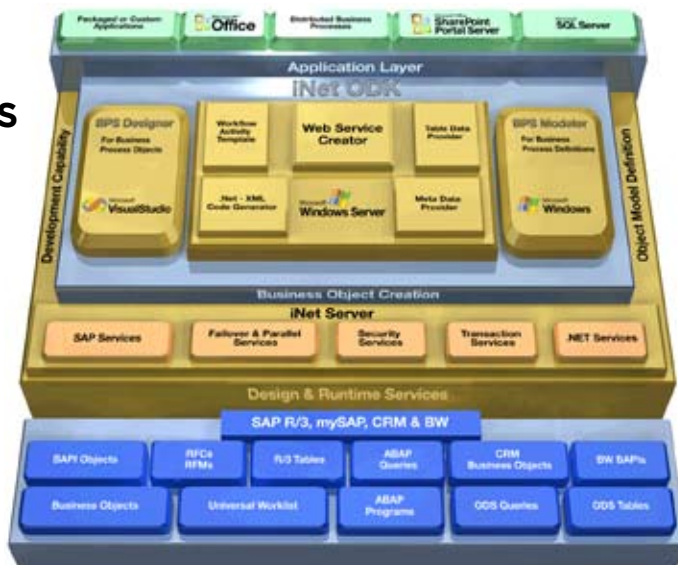
BPS Process Modeler. Is a stand-alone Windows application used by SAP business analysts to define and manage business processes needed by the organization. Full visual tools enable the drag-and-drop selection of any SAP information assets, business objects, functions or documents from any connected SAP system for inclusion in a business process. The new or altered processes are then published for distribution to .Net developers.

BPS Process Designer. Visual Studio 2005/03 development environment plug-in supports creation of new .NET objects in support of SAP business processes. For any business object selected from target SAP systems, iNet auto-generates .NET objects in C# or VB.NET code and object classes for .NET or Web Services. The .NET developer is abstracted from the underlying SAP systems and requires no knowledge of SAP programming or data models. Visual tools for Process Modeler are also available in the Process Designer for defining and modifying business processes.

iNet InterOp Server. Delivers scalable, high-speed, lightweight services that provide full security plus assured transactional integrity for SAP business objects incorporated in .NET based business scenarios.

iNet's unique technology alleviates the need for complex, costly middleware infrastructures. As a plug-in service to Windows Servers, iNet provides connectivity to standard SAP BAPI's, business objects, info objects, RFCs, custom RFC's and Worklists. All exposed .NET ready.

iNet BPS



Business Advantages

- » Create new composite eBusiness apps in hours
- » Cut application integration times by 95%
- » Realize 25x ROI advantage over middleware solutions
- » Create effective impact on SAP business processes and business insights with .NET platforms and Office tools

Maximizes ROI in existing SAP assets. Supports all SAP R/3 releases. Requires no modifications or changes to SAP systems or programs. No dependencies on SAP NetWeaver, BW, or XI.

iNet Server Advantages

Multi-mode. Instant plug-in .NET service. Runtime services support .NET, HTTP/XML Web Services and COM+ connectivity.

Transactional integrity. Bi-directional support for both information delivery and transactional processes with assured transactional integrity (ACID) for distributed transactions and high availability features for Fail Over and Redundancy.

Fully reflected SAP security. Assures the security roles and authorizations frameworks of the host SAP systems are invoked and honored by connecting .NET platforms and users.

Enterprise class service. Scalable performance for distributed process services and multi-threaded for parallel processing. Simultaneous access to multiple, even globally distributed, SAP R/3, CRM and BW systems.

About ERP-Link Corp.

Since 1998, ERP-Link has provided solutions to maximize SAP ROI. We enable enterprises to extend SAP systems with new business scenarios and optimized capabilities through integration with Microsoft platforms and information worker tools. ERP-Link's partner network enables companies worldwide to accelerate the business impact of the iNet Business Optimization Platform.

The names of actual products and companies mentioned herein may be the trademarks of their respective owners. ERP-Link makes no warranties, expressed or implied in this summary. The ERP-Link logo, iNet and iNet.BI are copyrights, trademarks or registered trademarks of ERP-Link Corp.

The iNet Server provides business process services to ERP-Link's iNet.BI product module, that total solution has been "Certified for SAP Netweaver" and designated:



ERP-LINK

310 SW 4th Ave Portland, OR 97204
503.227.1660

www.erp-link.com
info@erp-link.com